

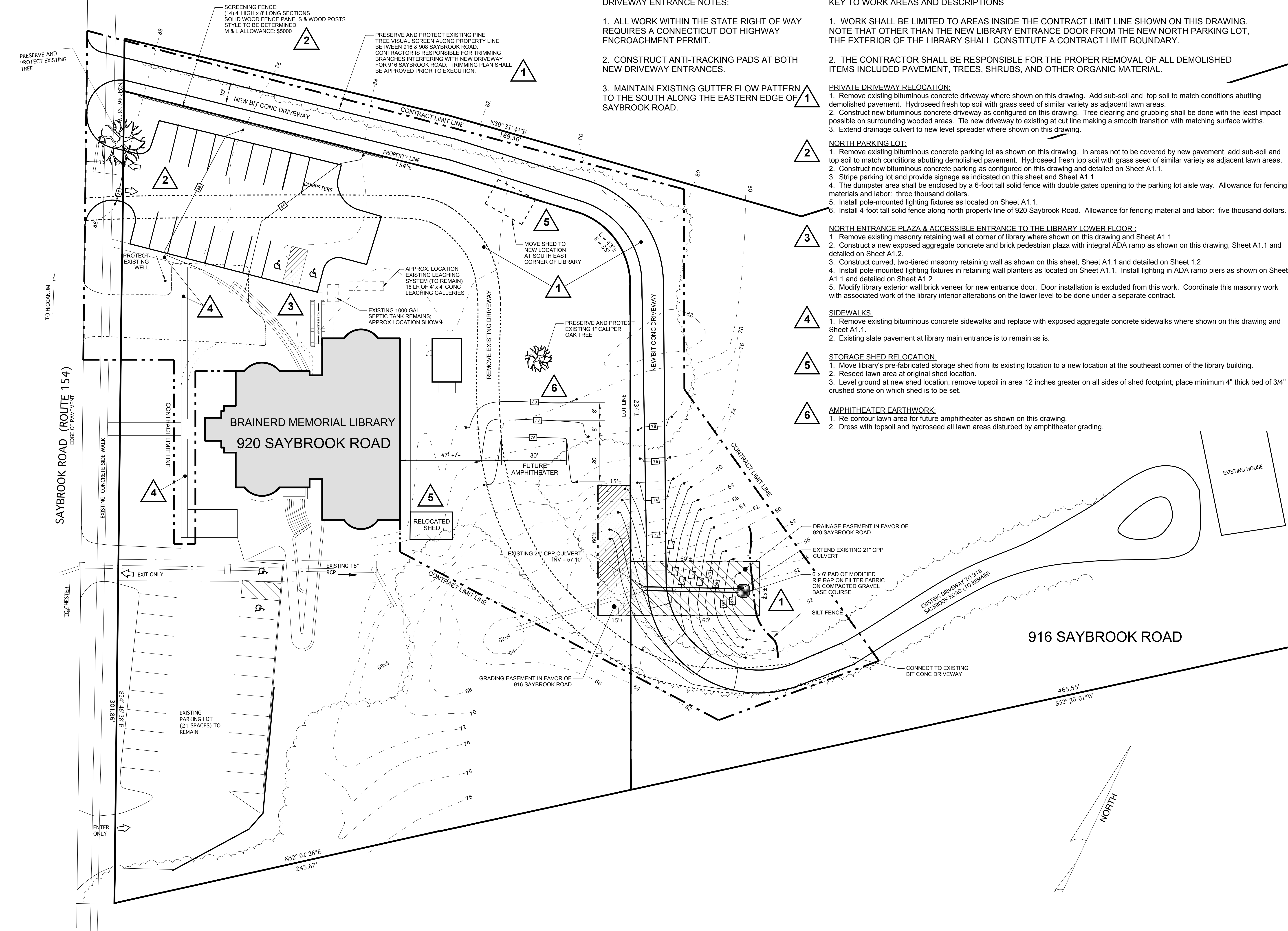
908 SAYBROOK ROAD

DRIVEWAY ENTRANCE NOTES:

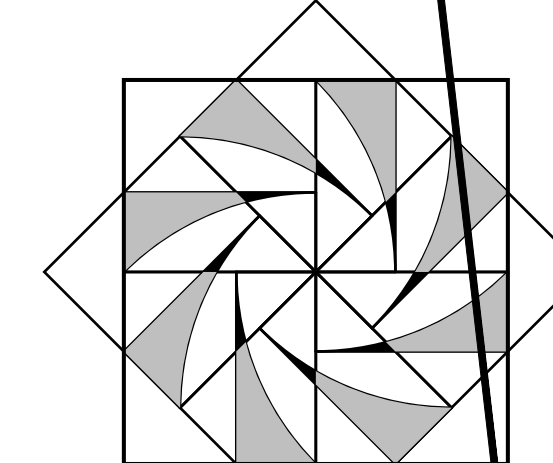
1. ALL WORK WITHIN THE STATE RIGHT OF WAY REQUIRES A CONNECTICUT DOT HIGHWAY ENCROACHMENT PERMIT.
2. CONSTRUCT ANTI-TRACKING PADS AT BOTH NEW DRIVEWAY ENTRANCES.
3. MAINTAIN EXISTING GUTTER FLOW PATTERN TO THE SOUTH ALONG THE EASTERN EDGE OF SAYBROOK ROAD.

KEY TO WORK AREAS AND DESCRIPTIONS

1. WORK SHALL BE LIMITED TO AREAS INSIDE THE CONTRACT LIMIT LINE SHOWN ON THIS DRAWING. NOTE THAT OTHER THAN THE NEW LIBRARY ENTRANCE DOOR FROM THE NEW NORTH PARKING LOT, THE EXTERIOR OF THE LIBRARY SHALL CONSTITUTE A CONTRACT LIMIT BOUNDARY.
 2. THE CONTRACTOR SHALL BE RESPONSIBLE FOR THE PROPER REMOVAL OF ALL DEMOLISHED ITEMS INCLUDED PAVEMENT, TREES, SHRUBS, AND OTHER ORGANIC MATERIAL.
- PRIVATE DRIVEWAY RELOCATION:**
1. Remove existing bituminous concrete driveway where shown on this drawing. Add sub-soil and top soil to match conditions abutting demolished pavement. Hydroseed fresh top soil with grass seed of similar variety as adjacent lawn areas.
 2. Construct new bituminous concrete driveway as configured on this drawing. Tree clearing and grubbing shall be done with the least impact possible on surrounding wooded areas. Tie new driveway to existing at cut line making a smooth transition with matching surface widths.
 3. Extend drainage culvert to new level spreader where shown on this drawing.
- NORTH PARKING LOT:**
1. Remove existing bituminous concrete parking lot as shown on this drawing. In areas not to be covered by new pavement, add sub-soil and top soil to match conditions abutting demolished pavement. Hydroseed fresh top soil with grass seed of similar variety as adjacent lawn areas.
 2. Construct new bituminous concrete parking as configured on this drawing and detailed on Sheet A1.1.
 3. Stripe parking lot and provide signage as indicated on this sheet and Sheet A1.1.
 4. The dumpster area shall be enclosed by a 6-foot tall solid fence with double gates opening to the parking lot aisle way. Allowance for fencing materials and labor: three thousand dollars.
 5. Install pole-mounted lighting fixtures as located on Sheet A1.1.
 6. Install 4-foot tall solid fence along north property line of 920 Saybrook Road. Allowance for fencing material and labor: five thousand dollars.
- NORTH ENTRANCE PLAZA & ACCESSIBLE ENTRANCE TO THE LIBRARY LOWER FLOOR:**
1. Remove existing masonry retaining wall at corner of library where shown on this drawing and Sheet A1.1.
 2. Construct a new exposed aggregate concrete and brick pedestrian plaza with integral ADA ramp as shown on this drawing, Sheet A1.1 and detailed on Sheet A1.2.
 3. Construct curved, two-tiered masonry retaining wall as shown on this sheet, Sheet A1.1 and detailed on Sheet 1.2
 4. Install pole-mounted lighting fixtures in retaining wall planters as located on Sheet A1.1. Install lighting in ADA ramp piers as shown on Sheet A1.1 and detailed on Sheet A1.2.
 5. Modify library exterior wall brick veneer for new entrance door. Door installation is excluded from this work. Coordinate this masonry work with associated work of the library interior alterations on the lower level to be done under a separate contract.
- SIDEWALKS:**
1. Remove existing bituminous concrete sidewalks and replace with exposed aggregate concrete sidewalks where shown on this drawing and Sheet A1.1.
 2. Existing slate pavement at library main entrance is to remain as is.
- STORAGE SHED RELOCATION:**
1. Move library's pre-fabricated storage shed from its existing location to a new location at the southeast corner of the library building.
 2. Reseed lawn area at original shed location.
 3. Level ground at new shed location; remove topsoil in area 12 inches greater on all sides of shed footprint; place minimum 4" thick bed of 3/4" crushed stone on which shed is to be set.
- AMPHITHEATER EARTHWORK:**
1. Re-contour lawn area for future amphitheater as shown on this drawing.
 2. Dress with topsoil and hydroseed all lawn areas disturbed by amphitheater grading.



REVISIONS	
Date	Notes



J. W. HUBER ARCHITECT
 45 Bokum Rd. P. O. Box 441
 Essex, CT 06426
 (860) 767-7334

Brainerd Memorial Library
 North Parking Lot, Pedestrian
 Plaza & Associated Work

920 Saybrook Road
 Haddam, CT 06438

Work Scope Summary Plan

Job No. 18-1113

Drawn by	Date May 16, 2019
Checked by	Scale 1" = 20'

A
1.0